

iPad Mini Wall Mount Bracket - Flush Mount Information and Instructions

The iPad Mini Wall Bracket – Magnet can be installed flush with a wall, with only the front panel (about 1/8" thick) protruding from the wall surface. The bracket can be installed in either "landscape" or "portrait" orientation.

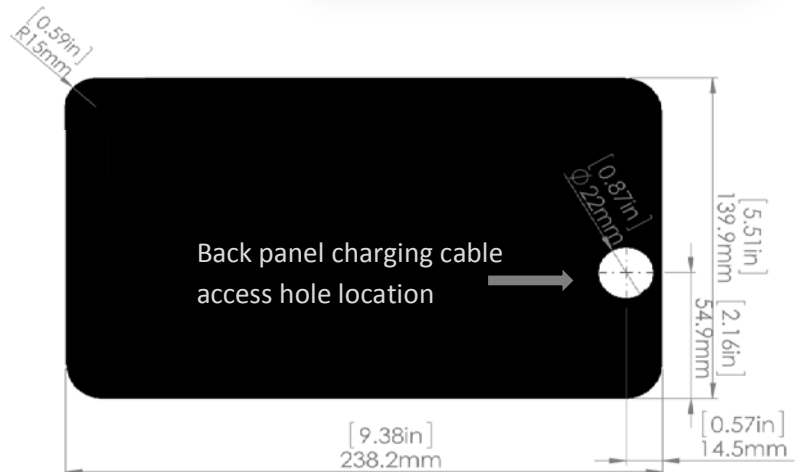
To install the iPad Mini Wall Mount Bracket – Magnet flush, a hole should be cut in the drywall or other wall surface material. Both 1/2" (most common) and 5/8" standard drywall material are compatible with this type of installation.

The cutout should be 9.4"x5.5" with 0.6" in diameter round corners. Please refer to the drawing on this page for exact dimensions and shape.

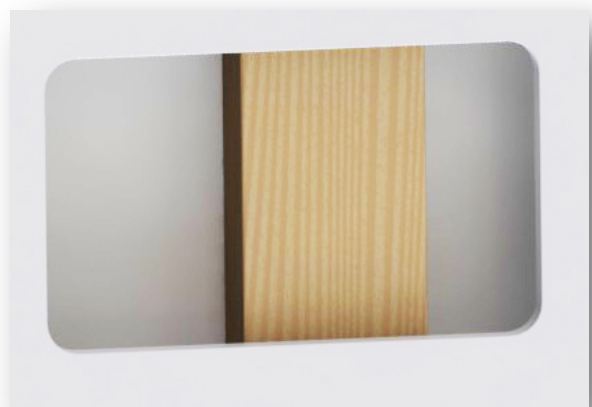


Do not exceed these dimensions by more than 1/16", to allow the front panel to cover the cutout.

The iPad Wall Bracket back panel can be used as a template for the cutout.



The cutout should have a stud behind it that will be used for affixing the back panel. If a stud is not available, a "filler" stud can be added to accommodate the installation.



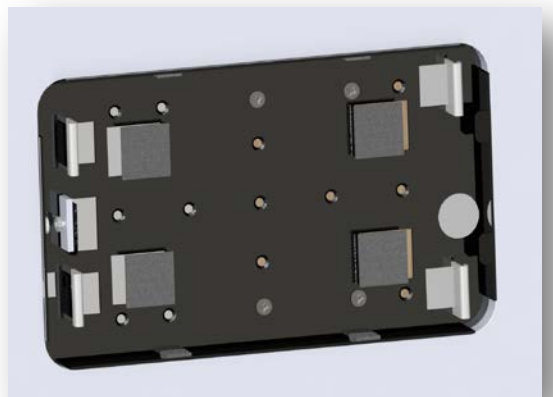
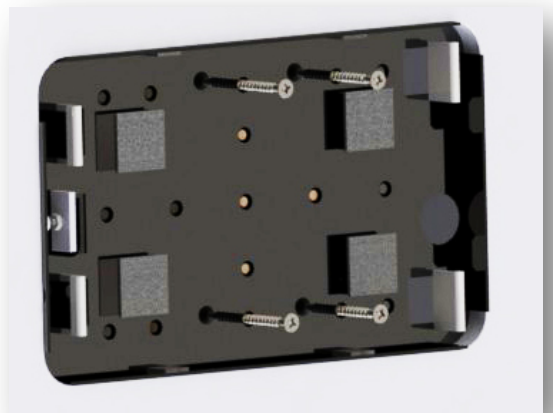
Once the cut is done, the back panel can be affixed to a stud inside the dry wall. We recommend using at least 4 screws for attaching the back panel, spaced as far apart as possible given the installation setup. Multiple screw holes in the back panel provide ample options for screw positions. Screws exact position will depend on the stud(s) position.

Use #8 flat head wood screws at least 1.25" long, predrill stud if needed.

A charging cable can be routed out through the hole in the back panel (location and size shown on the drawing).

Our 15' USB pre-tested extension cable (part # 610563573097) can be used in conjunction with the iPad original charging cable for installations located further away from the power source. Our Remote Charging Kit can extend that distance to up to 300' away from an outlet.

Please use your original iPad charging cable only by itself or in conjunction with one of our charging solutions, to ensure proper charging and synching.



Opening and closing the iPad Mini Wall Bracket in a flush installation

To open the iPad Mini Wall Bracket – Magnet in a flush installation, while supporting the iPad Mini , simply slide the front panel sideways toward the home button side, and then lift the home button side of it slightly away from the wall to release the front panel. To close it, reverse the operation.

